

## 3m x 3m and 2.4m x 2.4m Marquees

Weight per leg	Wind rating for weighted marquees
26kg	46 km/hr
39kg	55 km/hr
52kg	62 km/hr
65kg	69 km/hr
78kg	75 km/hr
91kg	80 km/hr



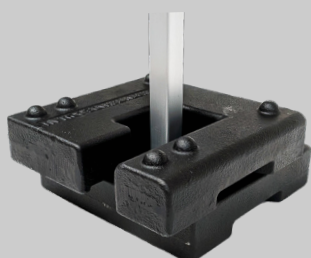
## 3m x 4.5m Marquees

Weight per leg	Wind rating for weighted marquees
26kg	27 km/hr
39kg	32 km/hr
52kg	37 km/hr
65kg	42 km/hr
78kg	47 km/hr
91kg	52 km/hr



## 6m x 3m Marquees

Weight per leg	Wind rating for weighted marquees
26kg	33 km/hr
39kg	39 km/hr
52kg	44 km/hr
65kg	48 km/hr
78kg	53 km/hr
91kg	56 km/hr



### Weighting your marquee

- Leg weights are required to weigh down your marquee (as seen in the image)
- **1 LEG WEIGHT = 13KG**  
(Minimum 2 weights required per leg for 26kg)